

Elements DataTraction

applications on demand

DataTraction for Applications is an application-generation platform that allows developers to create centralized, secure online data management environments using a wizard- and configuration-based approach. A single instance of DataTraction maintains a set of common capabilities such as data entry, searching, reporting, workflow, alerts, role administration and individualized Portal management that are automatically utilized by each application.

Most enterprises and government organizations have dozens to hundreds of separate systems that have been built by employees or contractors with different components and different styles that need to be operated, maintained and trained separately. Most of these applications have many requirements in common, with the only essential differences being information model, data entry screens, reports and workflows.

DataTraction for Applications "factors out" the common requirements, providing them out-of-the-box and allows developers to focus on the differences. Initial development time is decreased significantly and more importantly maintenance, support and training costs also decrease, especially as more applications are provisioned in this environment.

The DataTraction platform can separate each application's environment into protected areas, enabling isolated permission and user interface management, while also allowing a centralized cross-solution perspective. This allows extremely easy sharing of information across applications as well as interweaving of functions, when desired. Customers benefit from data centralization, independent management features, common user interface and enterprise-class features such as history, audit trail, collaboration, etc. Over time, common information can "graduate" into shared areas so each new system is more likely to connect to existing information and functionality – even further decreasing implementation time and increasing reuse.

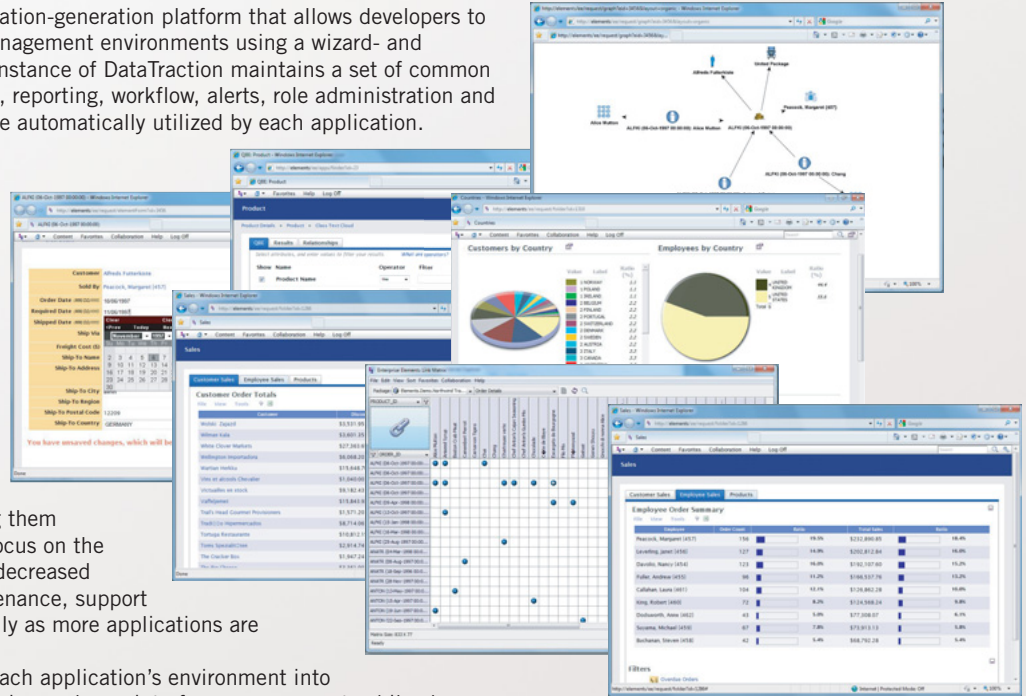
DataTraction Benefits

Development Cost Reduction Efficiencies are gained both through the use of inherent components as well as a configuration-based vs code-based architecture..

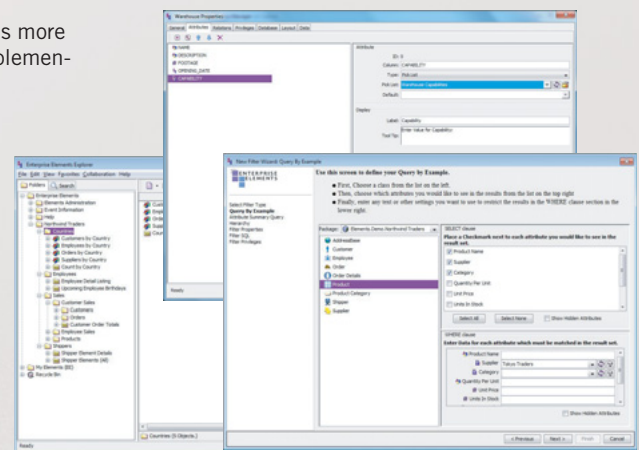
Increased Agility Instant deployment means tighter spirals.

Maintenance Cost Reduction An existing application can be analyzed and extended through simple interaction with the configuration tools vs someone else's source code. The benefit of this increases as more applications are developed since a single resource can maintain many concurrently.

Support Cost Reduction Common capabilities mean common support skills, common answers and common fixes. As users become conversant with the common features, support burden decreases on average as additional applications are built.



Auto-Generated User Interface



Solution Wizards

Data Traction is for you if:

You use Oracle and...

You wish to dramatically reduce lifecycle costs of niche applications

How does it work?

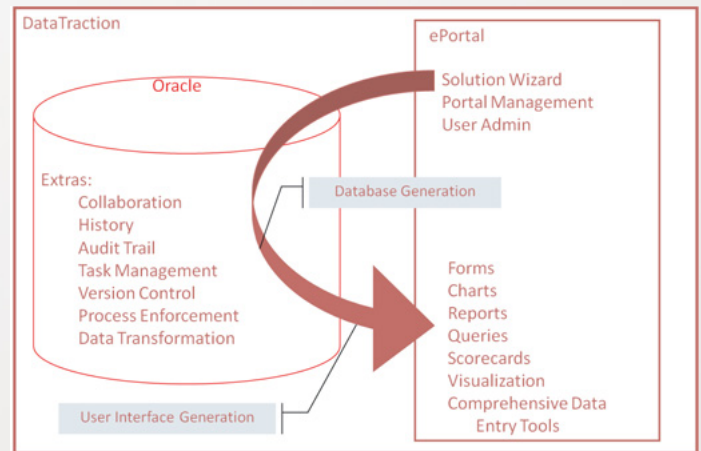
A set of Web-based Java wizards and other tools are used to configure the desired system's information model and from that, DataTraction generates the required tables and other database configuration, a Web-based user interface for data entry and visualization, and a large number of reports and analytical views, based on analysis of the information model.

All user interface components that are generated by the configuration process are available for arrangement into custom user-specific portals using a drag-and-drop portal manager.

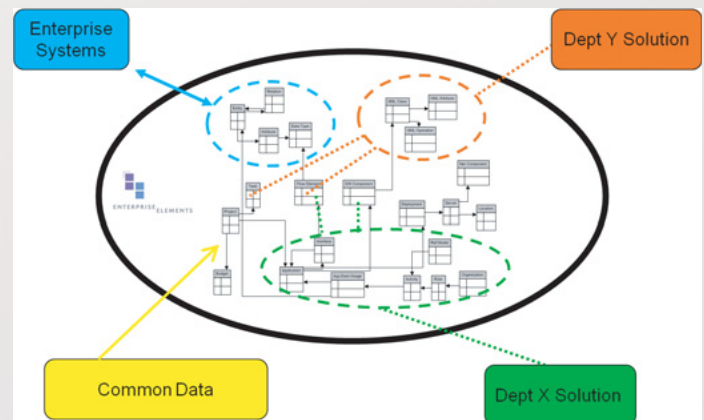
A host of "enterprise-class" features (such as audit trail, discussion threads, task management and change management) are native to the platform, allowing anything configured to take automatic advantage of these features.

Enterprise Capabilities

- **100% Web-based**
 - HTML and Java User Interface
 - Web-Services Layer for Integration
- **Configurable Information Model**
 - Logical information model (Metamodel) allows easy configuration for any solution
 - Relational back-end, supporting scalability and direct query
 - Innovative implementation leverages the full power of Oracle
- **Collaborative Workflow Support**
 - Email Alerts, Task Management & Discussion Threads
 - Customizable enforced process at any level within application
- **Automatic Diagramming**
 - Queries create diagrams for:
 - Relationship discovery
 - Relationship visualization
- **On-line Querying, Reporting & Metrics**
 - Inter-navigation between reports and data entry and collaboration views make data "actionable"
 - "Digital Desktop" look & feel to give users summaries of data, progress, status, etc.
- **Advanced Access Control**
 - Project-, Data type-, Object- & Attribute-level security
 - Enforced by Oracle – cannot be circumvented by direct database access
- **History**
 - Any change to objects or relationships is stored and any past version can be viewed for comparison or inspection
 - A full audit trail is maintained so any change can be traced back to its source



DataTraction in Action



Scalable Multi-tenancy

DataTraction is the next generation in enterprise information management, with applications in Enterprise Architecture, Application Portfolio Management, Systems Engineering, Acquisition Lifecycle Management, Enterprise Knowledge Management and many others.

**For more information, contact us at 888-230-2181
or find us online at <http://www.enterprise-elements.com>**